

Red Feather 4 Hand Units Contract Area Map

Arapaho and Roosevelt National Forests (10)
Canyon Lakes Ranger District (05)
Larimer County (69), Colorado (8)

Legend

	Contract Area Boundary C.4		Existing Road B.1 (e)
	Cutting Unit Boundary C.4		Hauling Prohibited H.7
	National Forest		Hauling Restricted H.7
	Non-Fed/Private		Keep Road Open H.7
	Meadow Protection H.20		Hiking Trail
	Wetland Protection H.20		Protected Streamcourse H.19
	Lake		

- # D x P Designation by Prescription WO-K-C.3.3.5 #
- ① Cutting Unit Identification Number B.1
- T Traffic Safety H.9

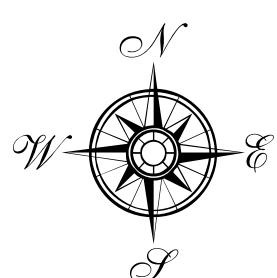
Protected Improvements

Appendix A - Section III, 3.1

	Road		Survey Monument H.11
	Trail		Cattle Guard
	Fence		Gate
	Wooden Fence		Trailhead
	Powerline		Dispersed Campsite

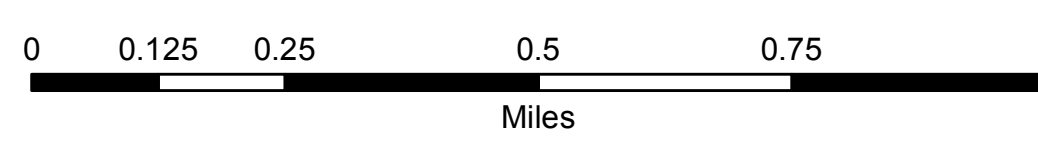
Units	DBH	Required Spacing
10G, 10Z, 11J, 11M, 12, 14A, 14B, 15	All dead/dying conifer species 2.0 feet tall to 9.9 inches DBH	Cut all dead/dying trees
10G, 10Z, 11J, 11M, 12, 14A, 14B, 15	Live Ponderosa Pine 2.0 feet tall to 9.9 inches DBH	Cut any live non-sawtimber/biomass tree whose outer canopy is within 5 feet (±1 foot) of the outer canopy of a live tree. Where biomass size trees do not overlap with live non-sawtimber or sawtimber reserve tree canopy, 10 feet x 10 feet (+/- 20%) bole spacing.
	Live Lodgepole Pine 2.0 feet tall to 6.9 inches DBH	
	Live Douglas-Fir/Other Conifers 2.0 feet tall to 9.9 inches DBH	
	All live species 2.0 feet to 5 inches DBH, if no live reserve trees	In ≥ 0.25 acre (one quarter acre) aspen clones and where aspen occupies 75% or more of the overstory, fell conifers within the aspen clone up to the diameters listed above.

Manual Treatment Units - Slash Requirements		
Units	Slash Method	Requirements
10G, 10Z, 11J, 11M, 12, 14A, 14B, 15	Pile Created Slash	1 inch diameter at the small end and 3 feet in length to a 8 inch diameter

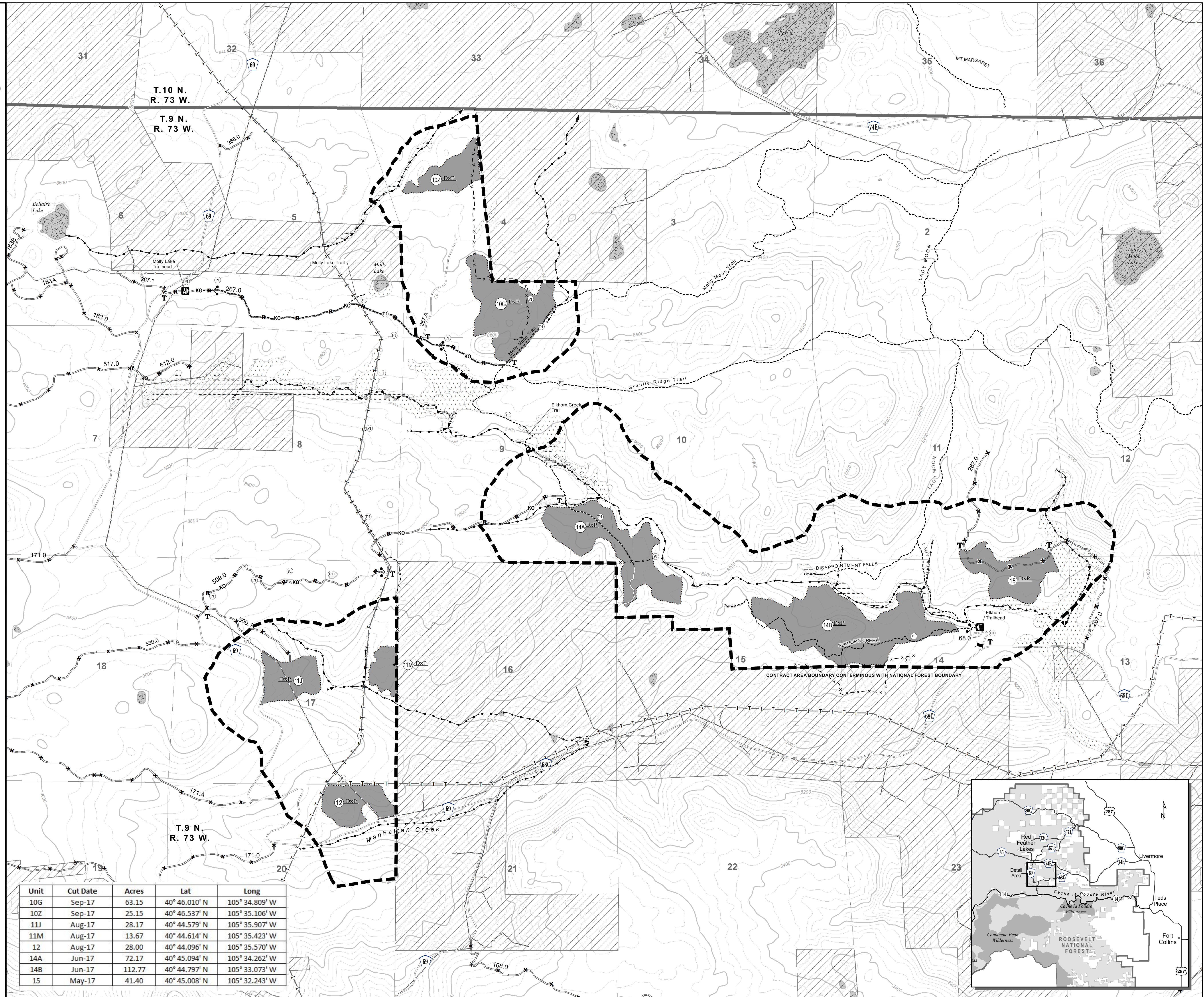


Scale 1:12,000
1 inch = 1,000 feet

Landlines are approximate
Township/Range based on 6th PM Colorado
Contour Interval is 40 feet



Coordinate System: NAD 1983 UTM Zone 13N
Projection: Transverse Mercator
Datum: North American 1983



Unit	Cut Date	Acres	Lat	Long
10G	Sep-17	63.15	40° 46.010' N	105° 34.809' W
10Z	Sep-17	25.15	40° 46.537' N	105° 35.106' W
11J	Aug-17	28.17	40° 44.579' N	105° 35.907' W
11M	Aug-17	13.67	40° 44.614' N	105° 35.423' W
12	Aug-17	28.00	40° 44.096' N	105° 35.570' W
14A	Jun-17	72.17	40° 45.094' N	105° 34.262' W
14B	Jun-17	112.77	40° 44.797' N	105° 33.073' W
15	May-17	41.40	40° 45.008' N	105° 32.243' W

